

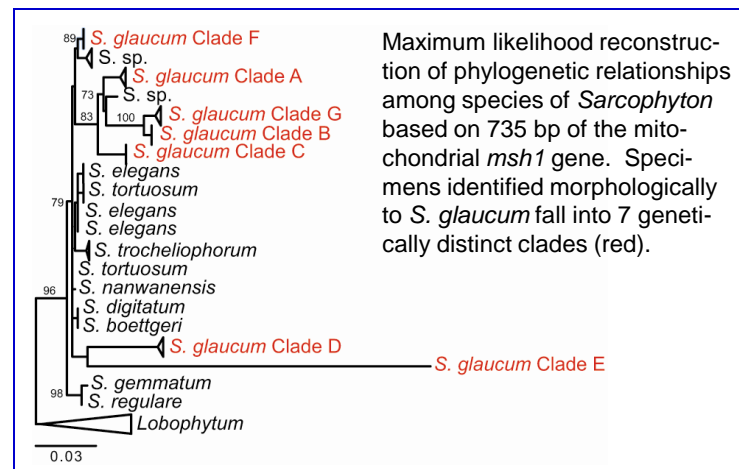
Variation in secondary metabolite chemistry among cryptic species of the soft coral *Sarcophyton glaucum*, a source of bioactive cembranoids



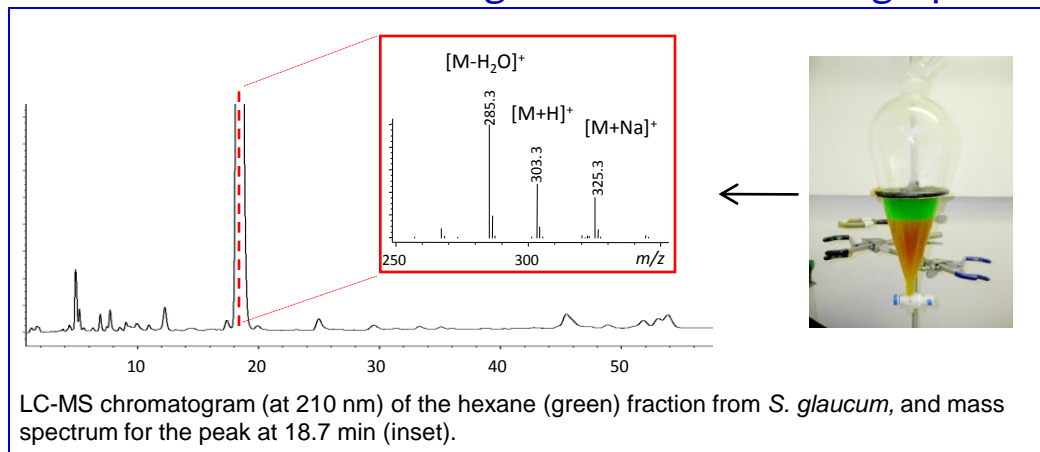
Sarcophyton glaucum

OBJECTIVE: to evaluate the relative contributions of genetics (species identity) vs. environmental factors to chemical variation in *S. glaucum*, a cryptic species complex.

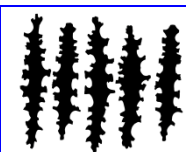
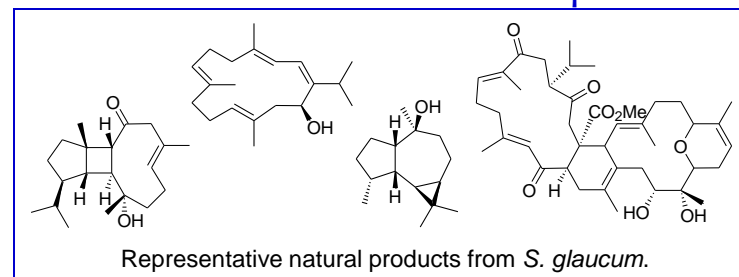
Aim 1. Collect *S. glaucum* samples in Palau and perform molecular phylogenetic analysis



Aim 2. Extract tissues and generate chemical fingerprints



Aim 3. Isolate and determine the structure of novel natural products



Photomicrographs of octocoral sclerites digitized for elliptical Fourier shape analysis

Aim 4. Perform quantitative morphometric analysis of sclerites to further discriminate cryptic species